

# DSZ-8 INDUCTORS

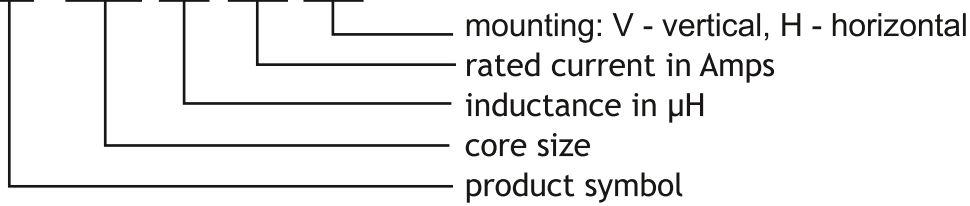


### APPLICATIONS:

- Differential mode filters
- Switched mode power supplies
- Electronic ballast applications
- Lighting
- White goods

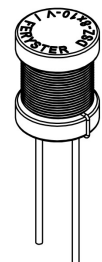
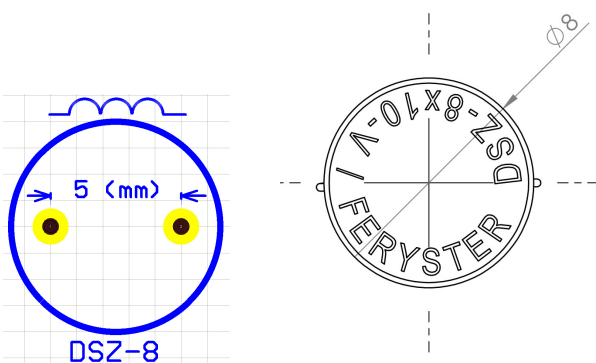
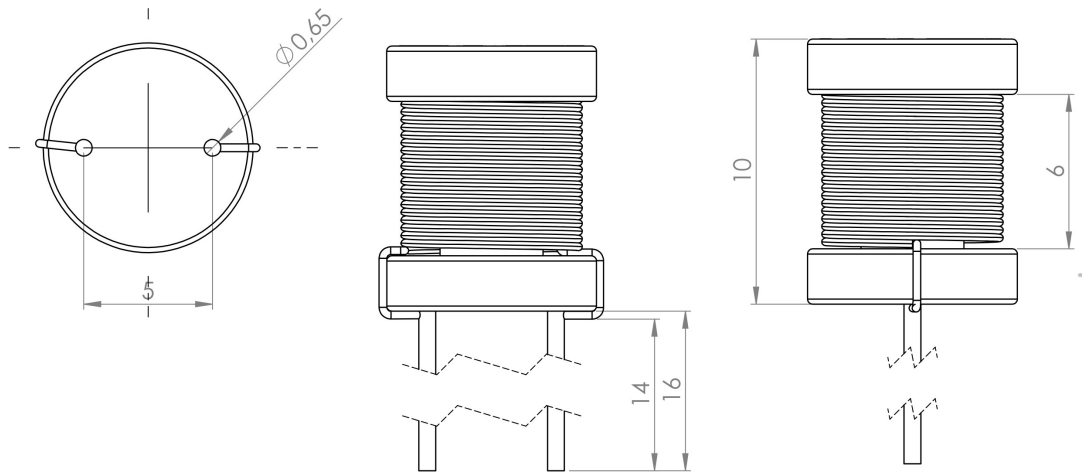
### ORDERING CODE:

DSZ - 8 / 4700 / 0,17 - V



### DIMENSIONS:

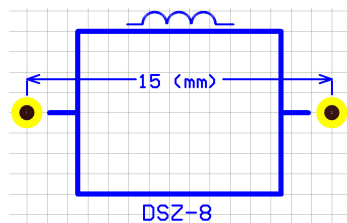
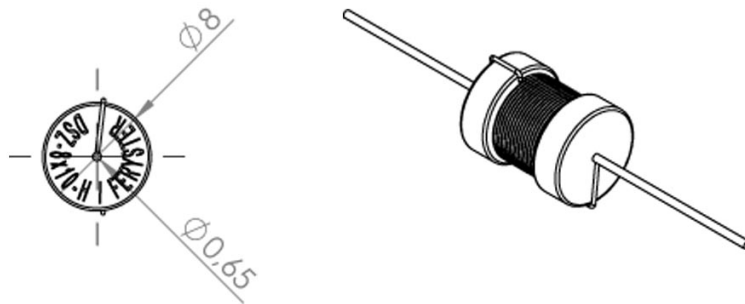
V - vertical



\* marking on the ferrite core not available

info@feryster.pl

H - horizontal



suggested footprint

\* marking on the ferrite core not available

### PROPERTIES:

Part number	$L_{nom}$ [ $\mu$ H]	$I_{nom}$ [A]	RDC [ $\Omega$ ]
DSZ-8/4,7/5,0	4,7	5,0	0,008
DSZ-8/6,8/3,0	6,8	3,0	0,018
DSZ-8/10/3,0	10	3,0	0,022
DSZ-8/15/2,2	15	2,2	0,036
DSZ-8/22/2,2	22	2,2	0,044
DSZ-8/33/2,2	33	2,2	0,054
DSZ-8/47/1,2	47	1,2	0,10
DSZ-8/68/1,2	68	1,2	0,12
DSZ-8/100/0,9	100	0,9	0,25
DSZ-8/150/0,8	150	0,8	0,29
DSZ-8/220/0,8	220	0,8	0,36
DSZ-8/330/0,7	330	0,7	0,53
DSZ-8/470/0,5	470	0,5	0,85
DSZ-8/680/0,4	680	0,4	1,14
DSZ-8/1000/0,35	1000	0,35	1,70
DSZ-8/1500/0,25	1500	0,25	2,30
DSZ-8/2200/0,25	2200	0,25	3,28
DSZ-8/3300/0,2	3300	0,2	4,84
DSZ-8/4700/0,17	4700	0,17	6,01

- Inductance tolerance:  $\pm 20\%$
- LCR meter  $f=10\text{kHz}$
- RDC Cu wire resistance:  $\pm 20\%$

CHARACTERISTICS:

