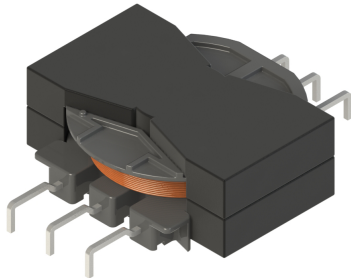


D-PQ3812 POWER INDUCTORS

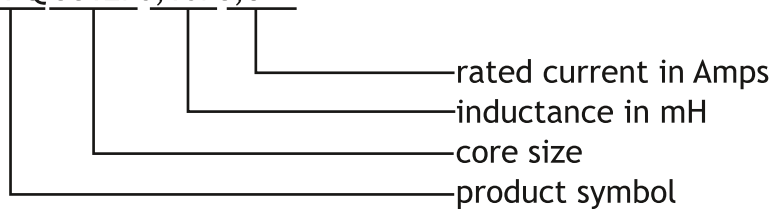


APPLICATIONS:

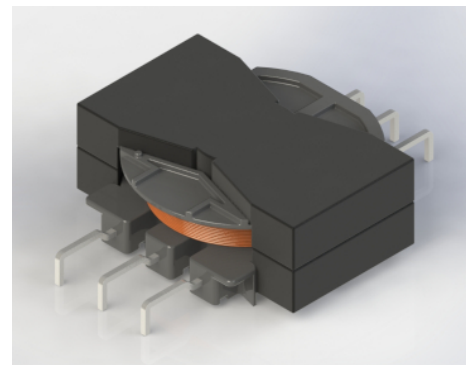
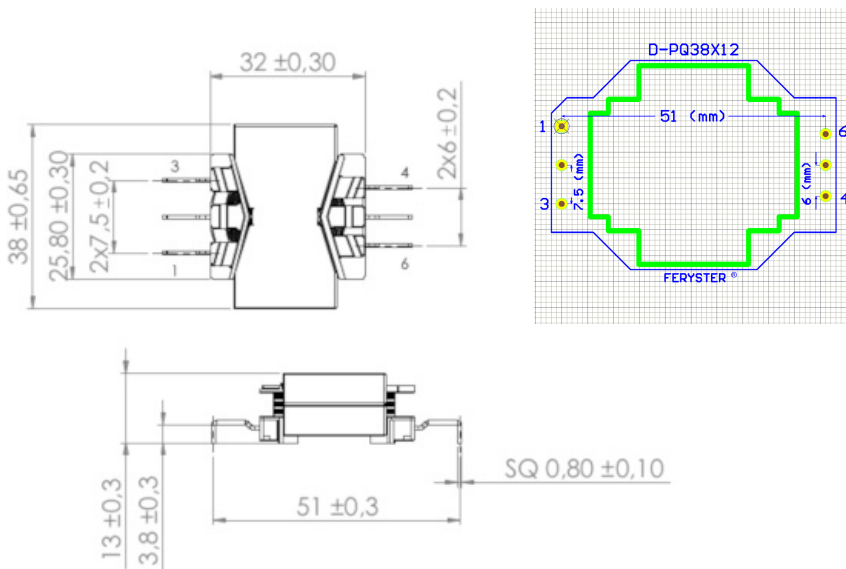
- output filters for class D amplifiers
- energy storage inductors (DC - 100kHz)
- DC/DC converters
- SMPS
- EMI filters (DC - 1MHz)

ORDERING CODE:

D-PQ 3812/0,10/8,6



DIMENSIONS:

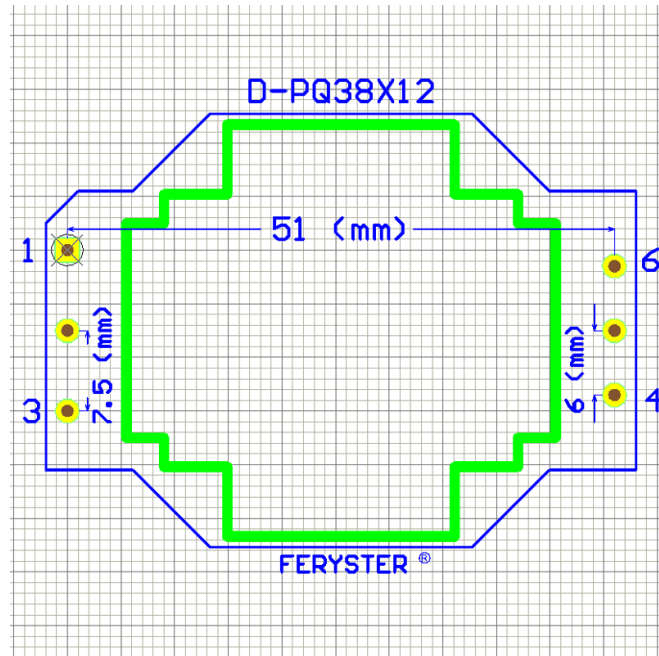


PQ38X12-K-6P

mat: PM-9820 E41429

UL EIS FER-130 class B - 130°C

UL EIS FER-155 class F - 155°C

FOOTPRINTS:

PROPERTIES:

Part number	L_{nom} [mH]	I_{nom} [A]	RDC [Ω]	ΔT [$^{\circ}C$]
D-PQ3812/0,10/8,6	0,10	8,6	0,034	68
D-PQ3812/0,15/6,9	0,15	6,9	0,046	53
D-PQ3812/0,22/5,8	0,22	5,8	0,065	54
D-PQ3812/0,33/5,0	0,33	5,0	0,114	74
D-PQ3812/0,47/4,4	0,47	4,4	0,145	72
D-PQ3812/0,68/3,5	0,68	3,5	0,195	72
D-PQ3812/1,0/2,7	1,0	2,7	0,300	54

- Inductance tolerance: $\pm 10\%$
- LCR meter $f=10\text{kHz}$
- Wire to core insulation 300V
- RDC Cu wire resistance: $\pm 20\%$

CHARACTERISTICS:
