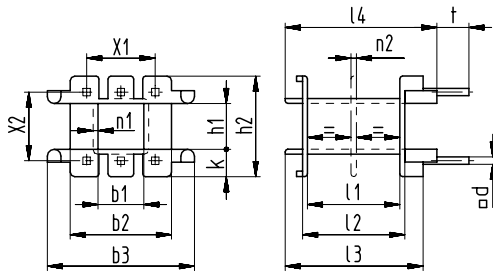


Sketch with main dimensions

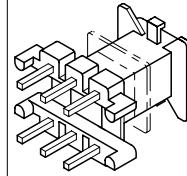


Standard: fully pinned, partial fitting on request.

Matching boxes for Wz 7595:  
Wz 7721/OS; see catalog page 214.

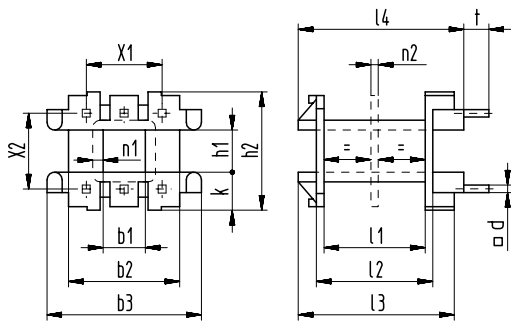
For spacers see column I4.

ST  
with molded-in pins □ 0,5 mm



b1 ± 0,1	b2 ± 0,2	b3 ± 0,2	h1 ± 0,1	h2 ± 0,2	k ± 0,1	l1 ± 0,2	l2 ± 0,2	l3 ± 0,2	l4 ± 0,3	n1 +0,2	n2 ± 0,1	d ± 0,1	t ± 0,2	X1 ± 0,2	X2 ± 0,2	X3 ①	Type	Art. No.	
3,9	8,6	14,3	3,9	10	3	7,5	8,6	13,1	14,5	0,5	0,4	0,5	3,5	2x3,81	7,5	2x3	EE 12,6/3,9/1 ST EE 12,6/3,9/2 ST	Wz 7595/1 ST Wz 7595/2 ST	3246 3261

Sketch with main dimensions

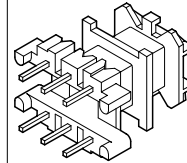


Standard: fully pinned, partial fitting on request.

Matching boxes for Wz 7487:  
Art. 3147 - Wz 7538/OS; see catalog page 214.

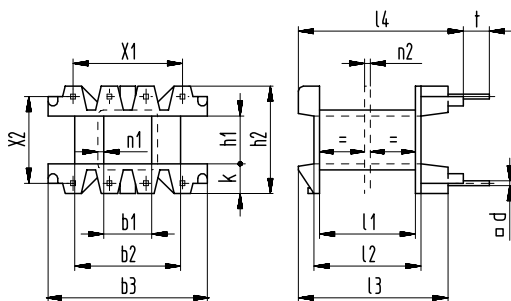
For spacers see column I4.

ST  
with molded-in pins □ 0,6 mm



b1 ± 0,1	b2 ± 0,2	b3 ± 0,2	h1 ± 0,1	h2 ± 0,2	k ± 0,1	l1 ± 0,2	l2 ± 0,2	l3 ± 0,2	l4 ± 0,3	n1 +0,2	n2 ± 0,1	d ± 0,1	t ± 0,2	X1 ± 0,2	X2 ± 0,2	X3 ①	Type	Art. No.	
5	11	16,1	5	11,5	3,2	10,1	11,3	15,1	16,3	0,5	0,6	0,6	3,5	2x3,81	7,5	2x3	EE 16/4,9/1 ST EE 16/4,9/2 ST	Wz 7487/1 ST Wz 7487/2 ST	3017 3290

Sketch with main dimensions

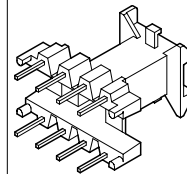


Standard: fully pinned, partial fitting on request.

Matching boxes for Wz 7822:  
Art. 3566 - Wz 7831/OS; see catalog page 214.

For spacers see column I4.

ST  
with molded-in pins □ 0,5 mm



b1 ± 0,1	b2 ± 0,2	b3 ± 0,2	h1 ± 0,1	h2 ± 0,2	k ± 0,1	l1 ± 0,2	l2 ± 0,2	l3 ± 0,2	l4 ± 0,3	n1 +0,2	n2 ± 0,1	d ± 0,1	t ± 0,2	X1 ± 0,2	X2 ± 0,2	X3 ①	Type	Art. No.	
5	11	17,6	5	11	2,9	10	11,3	16,4	18	0,5	-	0,5	3,5	3x3,81	8,9	2x4	EE 16/4,9/1 ST	Wz 7822/1 ST	3611

① X3 = max. number of slots or terminals